

打造新能源一流企业为社会提供
清洁稳定的能源产品和服务

To become a leading enterprise in the new
energy sector, delivering clean and reliable
energy products and services to society.



佛山市顺德区凯祥电器有限公司

FOSHAN SHUNDE KAIXIANG ELECTRICAL CO., LTD.

智能充电设备与运营综合解决方案提供商
EV Charging Equipment and Operation Integrated Solution Supplier

佛山市顺德区凯祥电器有限公司

FOSHAN SHUNDE KAIXIANG ELECTRICAL CO., LTD.

+86 133-8028-7808

+86 757 22212728

senbaoli@sblhg.com

<https://fssblhg.en.alibaba.com/>

广东省佛山市顺德区大良绿地中心5-3011
No.5-3011, Greenland Center, Daliang Town, Shunde District, Foshan City, Guangdong, China

佛山市顺德区凯祥电器有限公司
FOSHAN SHUNDE KAIXIANG ELECTRICAL CO., LTD.

目录

Contents

1

企业简介
enterprise profile

2

发展历程
development history

3

技术力量
Technical capabilities

4

产品介绍
Product Introduction



- u 凯祥电器有限公司成立于2005年，位于珠三角佛山市顺德区。
- u 团队已深耕电动车充电桩行业5年，10年以上项目运营经验和技术开发经验，充电桩产品 技术开发5年经验以上，以解决全球电动车充电安全和节能环保问题为己任。构建可持续创新的新能源产业，推动新能源行业发展，为“双碳”目标献上一份绵薄之力。
- u 公司拥有厂房35000平方米，现有21条生产线、12条SMT贴片生产线，技术开发力量雄厚，管理措施完善。并拥有较先进的研发、生产、检测设备和高素质测试人员。公司注重人才储备和培养，引入竞争、激励机制、汇聚了一支年轻、务实、高效的工作团队。
- u 公司拥有员工500余人，员工年龄结构18-30岁：400余人，公司人员占比比较年轻化，电子专业人员占比10%以上。
- u 公司已建立了ISO9001质量管理体系，ERP、MES、OA、WMS、SCM系统，产品严格按“UL”“CE”、“GS”标准设计生产，并符合欧盟ROHS、REACH要求。
- u 现销售3亿左右，计划销售增长由3.2亿增长至4.5亿以上，公司主要客户是九阳、苏泊尔、美的、东菱、海信等。广东高新技术企业，有六项专利，现正申请成为广东省工程中心，在某些电控技术已处于行业领先水平。

Kaixiang Electric Appliance Co., Ltd. was founded in 2005 and is located in Shunde District, Foshan City, within the Pearl River Delta region.

The company has been deeply engaged in the electric vehicle (EV) charging pile industry for five years, with over ten years of cumulative experience in project operations and technical development. Its EV charging

pile product line has accumulated more than five years of R&D and technical expertise, dedicated to addressing global challenges in EV charging safety, energy efficiency, and environmental sustainability. The

company strives to build a sustainable and innovative new energy ecosystem, contributing to the development of the new energy industry and supporting China's "dual carbon" goals.

Kaixiang Electric operates a 35,000-square-meter factory, equipped with 21 production lines and 12 SMT surface-mount technology lines. It boasts strong technical development capabilities, comprehensive management systems, and advanced R&D, manufacturing, and testing equipment, supported by highly qualified testing personnel. The company places great emphasis on talent cultivation and retention, implementing

competitive mechanisms and incentive programs to foster a young, pragmatic, and efficient workforce.

Currently employing over 500 staff members — approximately 400 of whom are aged between 18 and 30 — the company maintains a youthful organizational structure, with electronic engineering

professionals accounting for more than 10% of its workforce.

Kaixiang Electric has established a comprehensive quality management system certified to ISO9001, and utilizes ERP, MES, OA, WMS, and SCM systems for integrated operations. Its products are designed

and manufactured in strict compliance with international standards including UL, CE, and GS, and meet EU ROHS and REACH regulations.

Annual sales currently stand at around RMB 300 million, with plans to grow to over RMB 450 million from a projected base of RMB 320 million. Key customers include Joyoung, Supor, Midea, Donlim, and

Hisense. Recognized as a Guangdong High-Tech Enterprise, the company holds six patents and is currently applying to become a Guangdong Provincial Engineering Technology Research Center. In certain areas of

electrical control technology, Kaixiang Electric is already recognized as a leader in the industry.

我们秉承“用户至上”的原则，将用户需求抱在首位。我们始终坚持不断创新、不断突破，始终保持以产品、技术、服务为本的行业理念，全新全意做好产品的开发与用户的实际体验。现研发技术团队共有50人，其中硬件工程师20人，软件工程师14人，助理工程师5人，测试工程师6人，样板技术员4人。

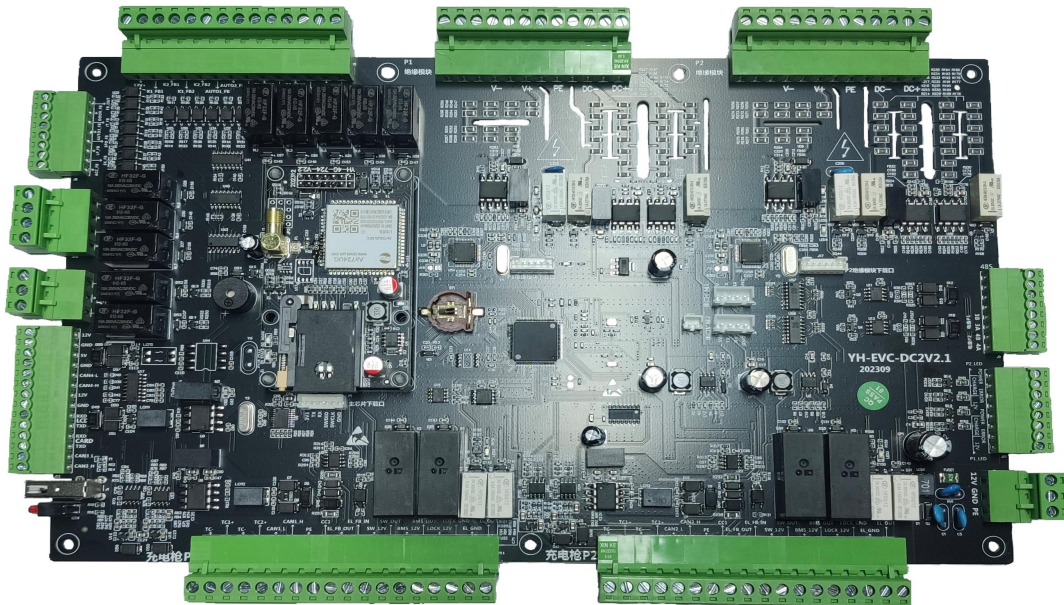
We uphold the principle of "Customer First," prioritizing user needs above all else. Committed to continuous innovation and breakthroughs, we steadfastly adhere to our industry philosophy centered on products, technology, and service, dedicating ourselves wholeheartedly to product development and delivering exceptional user experiences. Our R&D team comprises 50 members, including 20 hardware engineers, 14 software engineers, 5 assistant engineers, 6 test engineers, and 4 prototype technicians.

研发中心
R&D Center

研发部
R&D Department

测试中心
Testing Center

样板组
Prototype Group



发展历程 DevelopmentHistory



成立佛山市凯祥电器有限公司

Establish Foshan Kaixiang Electric Appliance Co., Ltd.

2005

获得守合同重信用企业称号

Awarded the Title of 'Contract-Honoring and Credit-Worthy Enterprise'

2017

2020

宁波凯祥智能由5条线充到7条线
Ningbo Kaixiang Intelligence has expanded from 5 production lines to 7 production lines.

开展充电桩主板及整机产品的自主研发、生产

Carry out independent research development, and production of charging pile motherboards and complete machine products.

充电桩销售覆盖中东、欧洲、非洲、东南亚、南美洲等多个国家

The sales of charging piles cover multiple countries in the Middle East, Europe, Africa, Southeast Asia, South America, and other regions.

2022

2024

2023

2021

2018

2017

2012

发展沿革

Milestone

2012年通过ISO9000质量管理体系认证审核

Passed the ISO9001 Quality Management System Certification Audit in 2012.

获得高新技术企业称号

Awarded the Title of High-Tech Enterprise

成立宁波凯祥智能科技有限公司

Established Ningbo Kaixiang Intelligent Technology Co., Ltd.

新厂房面积：20000m²，计划2022年投入使用

The new factory covers an area of 20,000 and is scheduled for operation in 2022.

开始欧标及美标的交流/直流充电桩主板、整机的研发、规模化生产与全球销售

Initiate the research and development, large-scale production, and global sales of AC/DC charging pile motherboards and complete machines compliant with European and American standards

强大的研发能力 Strong R&D Capabilities

拥有60余人研发队伍
(总部50人,分厂8人)
,大都曾服务过美的、
新宝、九阳、海信、
等知名
企业,具有多年设计
开发经验,对客户进行
一对一的专业服务。

Our R&D team consists of over 60 members (50 at headquarters, 8 at branch factories), most of whom have worked for renowned companies like Midea, Xinbao, Joyoung, and Hisense. With extensive design and development experience, we offer dedicated one-on-one professional services to our customers.

专业的生产能力 Professional production capability

拥有专业的SMT、
DIP自动化生产线,产
品生产线、波峰焊机、
ICT、FCT等先进生产
设备,年生产控制板
3000万套以上

Equipped with professional SMT and DIP automated lines, plus advanced facilities including assembly lines, wave soldering machines, ICT, and FCT testers, we produce over 30 million control board units annually.

卓越的品质管理 Excellent Quality Management

拥有IQC、IPEC、QA
三大检测,各种成品检测
试验仪器及相关配套设
备,并配备车间研发验
证、品质实验室等,全方
位监控确保产品品质。

With IQC, IPQC, and QA inspection systems, a full range of finished product testing instruments, and supporting facilities—including workshop R&D verification and quality labs—we conduct all-round monitoring to guarantee product quality.



充电桩研发中心 Charging Pile R&D Center



• 研发生产中心
R&D and Production Center



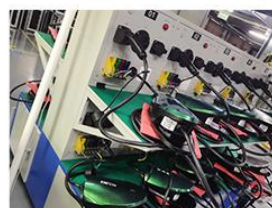
• 研发生产中心
R&D and Production Center



• 研发生产中心
R&D and Production Center



• 充电桩生产过程
charging pile production process



• 充电桩测试老化阶段
Charging Pile Testing and Aging Stage



• 充电桩测试老化阶段
Charging Pile Testing and Aging Stage



• 充电桩生产过程
charging pile production process



• 充电桩生产过程
charging pile production process



• 充电桩生产过程
charging pile production process



• 充电桩生产过程
charging pile production process



• 充电桩生产过程
charging pile production process



• 充电桩生产过程
charging pile production process



• 机器设备
Machinery Equipment



• 机器设备
Machinery Equipment



• 机器设备
Machinery Equipment



• 充电桩测试老化阶段
Charging Pile Testing and Aging Stage



• 充电桩测试老化阶段
Charging Pile Testing and Aging Stage



• 充电桩测试老化阶段
Charging Pile Testing and Aging Stage

公交充电站解决方案

PUBLIC CHARGING STATION SOLUTION

公交充电站解决方案,采用箱式充电系统或直流一体式集成系统,配以智能运营管理
系统、动力及安防监控系统。

Public Bus Charging Station Solution: It adopts either a containerized charging system or a DC integrated system, supported by an intelligent operation and management platform, as well as power supply and security monitoring systems.

方案特点

Solution Features

高效节能:电源模块峰值效率高达96%且具备休眠功能,降低运营成本,提高经济效益。

High Efficiency and Energy Saving: The power module achieves a peak efficiency of up to 96% and features a sleep function, reducing operational costs and enhancing economic benefits.

高度可靠:设备自身经过严格的可靠性测试,且具备多重保护功能;同时整站全网无缝覆盖,提供全方位的监控保护。

High Reliability: Our equipment passes strict reliability tests and features multiple protection mechanisms. The entire station also ensures seamless network coverage for all-around monitoring and safeguarding.

高度兼容:超宽电压输出范围,兼容不同电压等级各种新能源汽车充电,增加运营收益。

High compatibility: Featuring an ultra-wide voltage output range, it supports charging for various new energy vehicles across different voltage levels, thereby boosting operational revenue.

弹性充电:根据实际需求输出充电功率,既可大功率快速补电,又可慢速充电呵护电池。

Smart charging: delivers power output based on real-time needs, enabling both high-power fast charging and gentle slow charging to protect the battery.

适用范围

Scope of Application

公交集团公司:电动公交巴士。

Bus Group Company: Electric buses.

出租车及汽车租赁公司:配套建站建桩,满足运营需要。

City logistics companies: cargo logistics, commuter buses, shuttle buses.



智能停车场解决方案

INTELLIGENT PARKING SOLUTION

智能停车场电动汽车充电解决方案,竭力打造智能化停车场充电服务。通过刷卡、微信、支付宝、APP进行充电操作,通过APP、小程序实现找车位、找充电、找零钱等服务。贝兹德充电系统充电前安全自检,充电过程中充电信息安全透明,充电后充电结算简单快捷。

Intelligent Parking EV Charging Solution: We are committed to building smart parking charging services. Users can charge vehicles through card swiping, WeChat, Alipay, or APP, while the APP and mini-program provide integrated services including parking space search, charging location tracking, and change management. The Beizide Charging System features pre-charging safety checks, ensures transparent charging information during the process, and offers simple, efficient post-charging settlements.

方案特点

Solution Features

远程直观:手机APP、小程序可实现远程寻桩、预约、充电费用结算等智能服务,用户可直接

Remote Visualization: Through the mobile APP and mini-programs, users can access intelligent services such as remote charge/locating, reservation, and charging fee settlement. They can directly check the status of charging equipment, view charging/recharge records, and monitor balances.

查询充电设备状态、充电/充值记录、余额等。

Convenient Payment: Simply scan with WeChat or Alipay—easy and user-friendly.

智能多样:全系列充电产品,可安装到各种充电场所,满足不同用户的充电需求。

Intelligent diversity: A full range of charging products can be installed in various charging locations to meet the charging needs of different users.

安全高效:完善的安全防护措施、智能运营监控系统,全面提升系统安全和充电效率。

Safe and efficient: With comprehensive safety protection measures and intelligent operation monitoring system, the system's safety and charging efficiency are comprehensively improved.

适用范围

Scope of Application

商业写字楼:交流为主,直流为辅,提供多样化的充电方案。

Commercial office buildings: AC as the main source, DC as a supplement, providing diversified charging solutions.

居民社区:交流为主,兼顾直流,夜充日行。

Residential community: communication is the main focus, with consideration given to direct current, night charging and day travel.



产品介绍：国、欧、美标交流充电桩

Product Introduction: AC EV Chargers Compliant with GB/T, EU, and US Standards



模式二系列 MODE II SERIES

星途系列 XingTu Series

交流充电桩

AC EV CHARGER

7kW/11kW/22kW



快速交流充电

Fast AC Charging

充电速度更快、效率更高
Faster And More Efficient Charging

- 最高可达32A, 400V, 最大功率22kW
Up to 32A, 400V, max. 22kW

- 功率调节可定制

Power adjustment can be customized



家用 Domestic 国标 GB/T 美标 ABE 欧标 CE 特斯拉 TESLA



高可靠和耐用性

High reliability and durability

经久耐用

Durable

- 可在-25°C~+50°C之间全功率充电
Can be charged at full power between -25°C and +50°C
- 1.3英寸显示屏, 300nit, 画面更好更细腻
1.3-inch display screen, 300nit, better and more delicate picture quality
- 触摸按键/APP操作简单

Touch button/APP operation is simple



智能充电

Smart Charging

方便快捷

Convenient And Fast

- 连接APP, 控制、监控和运行您的设备
Connect to the app to control, monitor, and operate your device
- 实时动态平衡能源以降低电力成本
Real time dynamic energy balance to reduce electricity costs

- 易于维护
easy to maintain

easy to maintain

easy to maintain

easy to maintain

easy to maintain

easy to maintain

easy to maintain

easy to maintain

easy to maintain

easy to maintain

easy to maintain

easy to maintain

easy to maintain

easy to maintain

easy to maintain

easy to maintain

easy to maintain

easy to maintain

easy to maintain

easy to maintain

easy to maintain

easy to maintain

easy to maintain

easy to maintain

easy to maintain

easy to maintain

easy to maintain

easy to maintain

easy to maintain

easy to maintain

easy to maintain

easy to maintain

easy to maintain

easy to maintain

easy to maintain

easy to maintain

easy to maintain

easy to maintain

easy to maintain

easy to maintain

easy to maintain

easy to maintain

easy to maintain

easy to maintain

easy to maintain

easy to maintain

easy to maintain

easy to maintain

easy to maintain

easy to maintain

easy to maintain

easy to maintain

easy to maintain

easy to maintain

easy to maintain

easy to maintain

easy to maintain

easy to maintain

easy to maintain

easy to maintain

easy to maintain

easy to maintain

easy to maintain

easy to maintain

easy to maintain

easy to maintain

easy to maintain

easy to maintain

easy to maintain

easy to maintain

easy to maintain

easy to maintain

easy to maintain

easy to maintain

easy to maintain

easy to maintain

easy to maintain

easy to maintain

easy to maintain

easy to maintain

easy to maintain

easy to maintain

easy to maintain

easy to maintain

easy to maintain

easy to maintain

easy to maintain

easy to maintain

easy to maintain

easy to maintain

easy to maintain

easy to maintain

easy to maintain

easy to maintain

easy to maintain

easy to maintain

easy to maintain

easy to maintain

easy to maintain

easy to maintain

easy to maintain

easy to maintain

easy to maintain

easy to maintain

easy to maintain

easy to maintain

easy to maintain

easy to maintain

easy to maintain

easy to maintain

easy to maintain

easy to maintain

easy to maintain

easy to maintain

easy to maintain

easy to maintain

easy to maintain

easy to maintain

easy to maintain

easy to maintain

easy to maintain

easy to maintain

easy to maintain

easy to maintain

easy to maintain

easy to maintain

easy to maintain

easy to maintain

easy to maintain

easy to maintain

easy to maintain

easy to maintain

easy to maintain

easy to maintain

easy to maintain

easy to maintain

easy to maintain

easy to maintain

easy to maintain

easy to maintain

easy to maintain

easy to maintain

easy to maintain

easy to maintain

easy to maintain

easy to maintain

easy to maintain

easy to maintain

easy to maintain

easy to maintain

easy to maintain

easy to maintain

easy to maintain

easy to maintain

easy to maintain

easy to maintain

easy to maintain

easy to maintain

easy to maintain

easy to maintain

easy to maintain

easy to maintain

easy to maintain

easy to maintain

easy to maintain

easy to maintain

easy to maintain

easy to maintain

easy to maintain

easy to maintain

easy to maintain

easy to maintain

easy to maintain

easy to maintain

easy to maintain

easy to maintain

easy to maintain

easy to maintain

easy to maintain

easy to maintain

easy to maintain

easy to maintain

easy to maintain

easy to maintain

easy to maintain

easy to maintain

easy to maintain

easy to maintain

easy to maintain

easy to maintain

easy to maintain

easy to maintain

easy to maintain

easy to maintain

easy to maintain

easy to maintain

easy to maintain

easy to maintain

easy to maintain

easy to maintain

easy to maintain

easy to maintain

easy to maintain

easy to maintain

easy to maintain

easy to maintain

easy to maintain

easy to maintain

easy to maintain

easy to maintain

easy to maintain

easy to maintain

easy to maintain

easy to maintain

easy to maintain

easy to maintain

easy to maintain

easy to maintain

easy to maintain

easy to maintain

easy to maintain

easy to maintain

easy to maintain

easy to maintain

easy to maintain

easy to maintain

easy to maintain

easy to maintain

easy to maintain

easy to maintain

easy to maintain

easy to maintain

easy to maintain

easy to maintain

easy to maintain

easy to maintain

easy to maintain

easy to maintain

easy to maintain

easy to maintain

easy to maintain

easy to maintain

easy to maintain

easy to maintain

easy to maintain

easy to maintain

easy to maintain

easy to maintain

easy to maintain

easy to maintain

easy to maintain

easy to maintain

easy to maintain

easy to maintain

easy to maintain

easy to maintain

easy to maintain

easy to maintain

easy to maintain

easy to maintain

easy to maintain

easy to maintain

easy to maintain

easy to maintain

easy to maintain

easy to maintain

easy to maintain

easy to maintain

easy to maintain

easy to maintain

easy to maintain

easy to maintain

easy to maintain

easy to maintain

easy to maintain

easy to maintain

easy to maintain

easy to maintain

easy to maintain

easy to maintain

easy to maintain

easy to maintain

easy to maintain

easy to maintain

easy to maintain

easy to maintain

easy to maintain

easy to maintain

easy to maintain

easy to maintain

<

产品介绍：国、欧、美标交流充电桩

Product Introduction: AC EV Chargers Compliant with GB/T, EU, and US Standards



模式二系列 MODE II SERIES

领航员系列 Navigator Series

交流充电桩 AC EV CHARGER

3.5kW/7kW/11kW



快速交流充电 Fast AC Charging

充电速度更快、效率更高
Faster And More Efficient Charging

- 最高可达32A, 400V, 最大功率11kW
Up to 32A, 400V, max. 11kW
- 功率调节可定制
Power adjustment can be customized



家用 国标 美标 欧标 特斯拉
Domestic GB/T SAE J1772 IEC 62196 NACS



高可靠和耐用性 High reliability and durability 经久耐用 Durable

- 可在-25°C~+50°C之间全功率充电
Can be charged at full power between -25°C and +50°C
- 2.8英寸显示屏, 300nit, 画面更好更细腻
1.3-inch display screen, 300nit, better and more delicate picture quality
- 触摸按键/APP操作简单
Touch button/APP operation is simple



过压保护
Overvoltage protection



欠压保护
Undervoltage protection



防雷保护
Undervoltage protection



IP65



过流保护
overcurrent protection



过温保护
Over-temperature protection



IK10



智能充电 Smart Charging 方便快捷 Convenient And Fast

- 连接APP, 控制、监控和运行您的设备
Connect to the app to control, monitor, and operate your device
- 实时动态平衡能源以降低电力成本
Real time dynamic energy balance to reduce electricity costs
- 易于维护
easy to maintain

产品参数

PRODUCT PARAMETERS

国标

GB/T

输入电压 Input voltage	220Vac±15%/380Vac±15%
输入电流 Input current	16A/32A
额定功率 Rated power	3.5kW/7kW/11kW
漏电类型 Leakage type	A型 A+DC6mA
工作湿度 Working humidity	5%~95%无凝露
工作温度 Working temperature	5%~95% no moisture condensation or frost -25°C~+50°C

功能支持 指示灯、时间预约、接地选项、电流调节、蓝牙/WiFi (可选)
Feature Support Indicators, time setting, grounding options, current adjustment, Bluetooth/WiFi (optional)

保护功能 过欠压保护、过流保护、漏电保护、过温保护、防雷保护等
Defensive function Overvoltage/undervoltage protection, overcurrent protection, leakage current protection, overtemperature protection, lightning protection, etc.

美标/特斯拉

SAE J1772/NACS

输入电压 Input voltage	240Vac±15%
输入电流 Input current	16A/32A/40A
额定功率 Rated power	3.8kW/7.6kW/9.6kW
漏电类型 Leakage type	A型/CCID20可选 A or CCID20 optional

功能支持 指示灯、时间预约、接地选项、电流调节、蓝牙/WiFi (可选)
Feature Support Indicators, time setting, grounding options, current adjustment, Bluetooth/WiFi (optional)

保护功能 过欠压保护、过流保护、漏电保护、过温保护、防雷保护等
Defensive function Overvoltage/undervoltage protection, overcurrent protection, leakage current protection, overtemperature protection, lightning protection, etc.

欧标

IEC 62196

输入电压 Input voltage	230Vac±15%/400Vac±15%
输入电流 Input current	16A/32A
额定功率 Rated power	3.5kW/7kW/11kW
漏电类型 Leakage type	AC或A+DC6mA可选 AC or A+DC6mA optional
工作湿度 Working humidity	5%~95%无凝露
工作温度 Working temperature	5%~95% no moisture condensation or frost -25°C~+50°C

功能支持 指示灯、时间预约、接地选项、电流调节、蓝牙/WiFi (可选)
Feature Support Indicators, time setting, grounding options, current adjustment, Bluetooth/WiFi (optional)

保护功能 过欠压保护、过流保护、漏电保护、过温保护、防雷保护等
Defensive function Overvoltage/undervoltage protection, overcurrent protection, leakage current protection, overtemperature protection, lightning protection, etc.



专业认证

Professional Certification



产品介绍：国、欧、美标交流充电桩

Product Introduction: AC EV Chargers Compliant with GB/T, EU, and US Standards



模式二系列 MODE II SERIES

交流系列 AC Series

交流充电桩 AC EV CHARGER

3.5kW/7kW/11kW



快速交流充电 Fast AC Charging

充电速度更快、效率更高 Faster And More Efficient Charging

- 最高可达32A, 400V, 最大功率11kW
Up to 32A, 400V, max. 11kW
- 功率调节可定制
Power adjustment can be customized



家用

国标

美标

欧标

特斯拉



高可靠和耐用性 High reliability and durability

经久耐用 Durable

- 可在-25°C~+50°C之间全功率充电
Can be charged at full power between -25°C and +50°C
- 2.8英寸显示屏, 300nit, 画面更好更细腻
1.3-inch display screen, 300nit, better and more delicate picture quality
- 触摸按键/APP操作简单
Touch button/APP operation is simple



智能充电 Smart Charging 方便快捷 Convenient And Fast

- 连接APP, 控制、监控和运行您的设备
Connect to the app to control, monitor, and operate your device
- 实时动态平衡能源以降低电力成本
Real time dynamic energy balance to reduce electricity costs
- 易于维护
easy to maintain



过压保护
Overvoltage protection



欠压保护
Undervoltage protection



防雷保护
Undervoltage protection



IP65



过流保护
overcurrent protection



过温保护
Over-temperature protection



IK10

产品参数

PRODUCT PARAMETERS

国标

GB/T

输入电压 Input voltage	220Vac±15%/380Vac±15%
输入电流 Input current	16A/32A
额定功率 Rated power	3.5kW/7kW/11kW
漏电类型 Leakage type	A型 A+DC6mA
工作湿度 Working humidity	5%~95%无凝露
工作温度 Working temperature	5%~95% no moisture condensation or frost
工作温度 Working temperature	25°C~+50°C
功能支持 Feature Support	指示灯、时间预约、接地选项、电流调节、蓝牙/WiFi (可选)
保护功能 Defensive function	过欠压保护、过流保护、漏电保护、过温保护、防雷保护等 Overvoltage/undervoltage protection, overcurrent protection, leakage current protection, overtemperature protection, lightning protection, etc.

美标/特斯拉

SAE J1772/NACS

输入电压 Input voltage	240Vac±15%
输入电流 Input current	16A/32A/40A
额定功率 Rated power	3.8kW/7.6kW/9.6kW
漏电类型 Leakage type	A或CCID20可选 A or CCID20 optional

欧标

IEC 62196

输入电压 Input voltage	230Vac±15%/400Vac±15%
输入电流 Input current	16A/32A
额定功率 Rated power	3.5kW/7kW/11kW
漏电类型 Leakage type	AC或A+DC6mA可选 AC or A+DC6mA optional
工作湿度 Working humidity	5%~95%无凝露
工作温度 Working temperature	5%~95% no moisture condensation or frost
工作温度 Working temperature	-25°C~+50°C
功能支持 Feature Support	指示灯、时间预约、接地选项、电流调节、蓝牙/WiFi (可选)
保护功能 Defensive function	过欠压保护、过流保护、漏电保护、过温保护、防雷保护等 Overvoltage/undervoltage protection, overcurrent protection, leakage current protection, overtemperature protection, lightning protection, etc.

工作湿度 Working humidity	5%~95%无凝露
工作湿度 Working humidity	5%~95% no moisture condensation or frost
工作温度 Working temperature	-25°C~+50°C
工作温度 Working temperature	-25°C~+50°C
功能支持 Feature Support	指示灯、时间预约、接地选项、电流调节、蓝牙/WiFi (可选)
功能支持 Feature Support	Indicators, time setting, grounding options, current adjustment, Bluetooth/WiFi (optional)
保护功能 Defensive function	过欠压保护、过流保护、漏电保护、过温保护、防雷保护等 Overvoltage/undervoltage protection, overcurrent protection, leakage current protection, overtemperature protection, lightning protection, etc.
保护功能 Defensive function	Overvoltage/undervoltage protection, overcurrent protection, leakage current protection, overtemperature protection, lightning protection, etc.



专业认证

Professional Certification



产品介绍：国、欧、美标交流充电桩

Product Introduction: AC EV Chargers Compliant with GB/T, EU, and US Standards



模式三系列

MODE III SERIES

交流充电桩

AC EV CHARGER

7kW/11kW/22kW



快速交流充电

Fast AC Charging

充电速度更快、效率更高

Faster And More Efficient Charging

- 最高可达32A, 400V, 最大功率22kW
Up to 32A, 400V, max. 22kW
- 功率调节可定制
Power adjustment can be customized



商用
commercial use



家用
Domestic



国标
GB/T



美标
SAE J1772



欧标
IEC 62196



特斯拉
NACS



高可靠和耐用性

High reliability and durability

经久耐用

Durable

- 可在-25°C~+50°C之间全功率充电
Can be charged at full power between -25°C and +50°C
- 4.3英寸显示屏, 300nit, 画面更好更细腻
1.3-inch display screen, 300nit, better and more delicate picture quality
- 刷卡/APP操作简单
Card swiping/APP operation is simple



过压保护
Overvoltage protection



欠压保护
Undervoltage protection



防雷保护
Undervoltage protection



IP65



过流保护
overcurrent protection



过温保护
Over-temperature protection



IK10

典雅-出枪系列

Elegance - Plug Series



智能充电

Smart Charging

方便快捷

Convenient And Fast

- 连接APP, 控制、监控和运行您的设备
Connect to the app to control, monitor, and operate your device
- 实时动态平衡能源以降低电力成本
Real time dynamic energy balance to reduce electricity costs
- 易于维护
easy to maintain

产品参数

PRODUCT PARAMETERS

国标

GB/T

输入电压 Input voltage	220Vac±15%/380Vac±15%
输入电流 Input current	16A/32A
额定功率 Rated power	7W/11kW/22kW
漏电类型 Leakage type	A型 Type A
工作湿度 Working humidity	5%~95%无凝露 5%~95% no moisture condensation or frost
工作温度 Working temperature	-25°C~+50°C

功能支持 Feature Support	指示灯、时间预约、接地选项、电流调节、蓝牙/WIFI (可选) Indicators, time setting, grounding options, current adjustment, Bluetooth/WIFI (optional)
保护功能 Defensive function	过欠压保护、过流保护、漏电保护、过温保护、防雷保护等 Overvoltage/undervoltage protection, overcurrent protection, leakage current protection, overtemperature protection, lightning protection, etc.

美标/特斯拉

SAE J1772/NACS

输入电压 Input voltage	240Vac±15%
输入电流 Input current	32A/48A
额定功率 Rated power	7.6kW/11.5kW
漏电类型 Leakage type	A或CCID20可选 A or CCID20 optional

欧标

IEC 62196

输入电压 Input voltage	230Vac±15%/400Vac±15%
输入电流 Input current	16A/32A
额定功率 Rated power	7W/11kW/22kW
漏电类型 Leakage type	AC或A+DC6mA可选 AC or A+DC6mA optional
工作湿度 Working humidity	5%~95%无凝露 5%~95% no moisture condensation or frost
工作温度 Working temperature	-25°C~+50°C

功能支持 Feature Support	指示灯、时间预约、接地选项、电流调节、蓝牙/WIFI (可选) Indicators, time setting, grounding options, current adjustment, Bluetooth/WIFI (optional)
保护功能 Defensive function	过欠压保护、过流保护、漏电保护、过温保护、防雷保护等 Overvoltage/undervoltage protection, overcurrent protection, leakage current protection, overtemperature protection, lightning protection, etc.



专业认证

Professional Certification



RoHS



ISO



CE



FC

产品介绍：国、欧、美标交流充电桩

Product Introduction: AC EV Chargers Compliant with GB/T, EU, and US Standards



模式三系列

MODE III SERIES

交流充电桩

AC EV CHARGER

7kW/11kW/22kW

快速交流充电

Fast AC Charging



充电速度更快, 效率更高

Faster And More Efficient Charging

- 最高可达32A, 400V, 最大功率22kW

Up to 32A, 400V, max. 22kW

- 功率调节可定制

Power adjustment can be customized



商用

Commercial use



家用

Domestic



欧标

IEC 62196

高可靠和耐用性

High reliability and durability



经久耐用

Durable

- 可在-25°C~+50°C之间全功率充电

Can be charged at full power between -25°C and +50°C

- 4.3英寸显示屏, 300nit, 画面更好更细腻

1.3-inch display screen, 300nit, better and more delicate picture quality

- 刷卡/APP操作简单

Card swiping/APP operation is simple



过压保护
Overvoltage protection



欠压保护
Undervoltage protection



防雷保护
Undervoltage protection



IP65



过流保护
overcurrent protection



过温保护
Over-temperature protection



IK10

典雅-出座系列

Elegance - Socket Series



产品参数

PRODUCT PARAMETERS

欧标

IEC 62196

输入电压

Input voltage 230Vac±15%/400Vac±15%

输入电流

Input current 16A/32A

额定功率

Rated power 7W/11kW/22kW

漏电类型

Leakage type AC或A+DC6mA可选

AC or A+DC6mA optional

工作湿度

Working humidity 5%-95%无凝露

5%-95% no moisture condensation or frost

工作温度

Working temperature -25°C~+50°C

功能支持

Feature Support 指示灯, 时间预约, 接地选项, 电流调节, 蓝牙/WiFi (可选)

Indicators, time setting, grounding options, current adjustment, Bluetooth/WiFi (optional)

保护功能

Defensive function 过欠压保护, 过流保护, 漏电保护, 过温保护, 防雷保护等

Overvoltage/undervoltage protection, overcurrent protection, leakage current protection, overtemperature protection, lightning protection, etc.



专业认证

Professional Certification



产品介绍：国、欧、美标交流充电桩

Product Introduction: AC EV Chargers Compliant with GB/T, EU, and US Standards



模式三系列

MODE III SERIES

交流充电桩

AC EV CHARGER

7kW/11kW/22kW



快速交流充电

Fast AC Charging

充电速度更快, 效率更高

Faster And More Efficient Charging

- 最高可达32A, 400V, 最大功率22kW
Up to 32A, 400V, max. 22kW

- 功率调节可定制
Power adjustment can be customized



商用
commercial use



家用
Domestic



国标
GB/T



美标
SAE J1772



欧标
IEC 62196



特斯拉
NACS



高可靠和耐用性

High reliability and durability

经久耐用

Durable

- 可在-25°C~+50°C之间全功率充电
Can be charged at full power between -25°C and +50°C
- 4.3英寸显示屏, 300nit, 画面更好更细腻
1.3-inch display screen, 300nit, better and more delicate picture quality
- 刷卡/APP操作简单
Card swiping/APP operation is simple



过压保护
Overvoltage protection



欠压保护
Undervoltage protection



防雷保护
Undervoltage protection



IP65



过流保护
overcurrent protection



过温保护
Over-temperature protection



IK10

破晶-方屏系列

TJ - Square Screen Series



智能充电

Smart Charging

方便快捷

Convenient And Fast

- 连接APP, 控制、监控和运行您的设备
Connect to the app to control, monitor, and operate your device
- 实时动态平衡能源以降低电力成本
Real time dynamic energy balance to reduce electricity costs
- 易于维护
easy to maintain

产品参数

PRODUCT PARAMETERS

国标

GB/T

输入电压 Input voltage	220Vac±15%/380Vac±15%
输入电流 Input current	16A/32A
额定功率 Rated power	7W/11kW/22kW
漏电类型 Leakage type	A型 Type A
工作湿度 Working humidity	5%~95%无凝露 5%~95% no moisture condensation or frost
工作温度 Working temperature	-25°C~+50°C
功能支持 Feature Support	指示灯、时间预约、接地选项、电流调节、蓝牙/WiFi (可选) Indicators, time setting, grounding options, current adjustment, Bluetooth/WiFi (optional)
保护功能 Defensive function	过欠压保护、过流保护、漏电保护、过温保护、防雷保护等 Overvoltage/undervoltage protection, overcurrent protection, leakage current protection, overtemperature protection, lightning protection, etc.

美标/特斯拉

SAE J1772/NACS

输入电压 Input voltage	240Vac±15%
输入电流 Input current	32A/48A
额定功率 Rated power	7.6kW/11.5kW
漏电类型 Leakage type	A或CCID20可选 A or CCID20 optional

欧标

IEC 62196

输入电压 Input voltage	230Vac±15%/400Vac±15%
输入电流 Input current	16A/32A
额定功率 Rated power	7W/11kW/22kW
漏电类型 Leakage type	AC或A+DC6mA可选 AC or A+DC6mA optional
工作湿度 Working humidity	5%~95%无凝露 5%~95% no moisture condensation or frost
工作温度 Working temperature	-25°C~+50°C
功能支持 Feature Support	指示灯、时间预约、接地选项、电流调节、蓝牙/WiFi (可选) Indicators, time setting, grounding options, current adjustment, Bluetooth/WiFi (optional)
保护功能 Defensive function	过欠压保护、过流保护、漏电保护、过温保护、防雷保护等 Overvoltage/undervoltage protection, overcurrent protection, leakage current protection, overtemperature protection, lightning protection, etc.

工作湿度 Working humidity	5%~95%无凝露 5%~95% no moisture condensation or frost
工作温度 Working temperature	-25°C~+50°C
功能支持 Feature Support	指示灯、时间预约、接地选项、电流调节、蓝牙/WiFi (可选) Indicators, time setting, grounding options, current adjustment, Bluetooth/WiFi (optional)
保护功能 Defensive function	过欠压保护、过流保护、漏电保护、过温保护、防雷保护等 Overvoltage/undervoltage protection, overcurrent protection, leakage current protection, overtemperature protection, lightning protection, etc.



专业认证

Professional Certification



产品介绍：国、欧、美标交流充电桩

Product Introduction: AC EV Chargers Compliant with GB/T, EU, and US Standards



产品参数 Parameter

- 功率等级 Power level
- 电源 Power
- 额定电压 Rated voltage
- 额定电流 Rated current
- 频率 Frequency
- 输出电压 Output voltage
- 输出电流 Output current
- 额定功率 Rated power
- 电缆长度 Cable length
- 外壳材质 Case material
- 启动方式 Start mode
- LED指示灯 LED indicator
- RCD
- 电气保护 Electrical protection
- 防水等级 Water protection grade
- 安装方式 Installation mode
- 工作温度 Working temperature
- 储存温度 Storage temperature
- 工作湿度 Working humidity
- 海拔高度 Altitude
- 产品尺寸 Product size
- 包装尺寸 Packing size
- 净重 Net weight
- 毛重 Gross weight
- 执行标准 Execution standard
- 产品认证 Product certification

7kW/h	11kW/h	22kW/h
L+N+PE	L1+L2+L3+N+PE	L1+L2+L3+N+PE
AC 220-240V	AC 380-400V	AC 380-400V
32A	16A	32A
50/60Hz	50/60Hz	50/60Hz
AC 220-240V	AC 380-400V	AC 380-400V
32A	16A	32A
7kW/h	11kW/h	22kW/h
3.5m(可定制长度)/Customizable length		
PC9010		
即插即用/刷卡(Plug-and-Play)/RFID Reader		
绿/蓝/红(蓝色-待机;绿色-充电桩与车连接,闪烁表示充电中;红色-异常) Green/blue/red (blue -standby; green -charger connected to the vehicle, flashing; charging; red -abnormal)		
A		
过压保护、欠压保护、接地保护、防雷保护、漏电保护、阻燃保护、过流保护、智能温控保护、继电器粘连保护、输入关断保护、车级安全防护和防护人 Overvoltage protection, undervoltage protection, grounding protection, lightning protection, leakage protection, flame retardant protection, overcurrent protection, intelligent temperature control protection, relay adhesion protection, input shutdown protection, vehicle specification level protection vehicle and protective personnel		
IP66(枪头连接器在耦合状态下 IP55)/IP66 (IP55 when the gun head connector is coupled)		
壁挂式/杆式安装(Wall-mount/Pole-mount)		
-30°C~+50°C		
-40°C~+80°C		
5%~95% 无凝露, 无结露(5%~95% no moisture condensation or frost)		
<2000M		
35.5*22.8*11.8cm		
52*24*22cm		
≈4.2KG		
≈5.2KG		
GB/T18487.1 GB/T18487.2 GB/T20234.2 GB/T34657.1 NB/T33002 NB/T33008.2		
CE/FCC/ROHS/UKCA		

Q3系列交流充电桩

Q3 series AC charging pile

Q3系列交流充电桩可以在较短的时间内为电动汽车充满电,使您能够在短时间内恢复车辆的行驶能力;坚固耐用,具有良好的环境适应性,可在各种环境下持续稳定工作。具备多项安全保障措施,如过载保护、短路保护、接地故障保护等,可有效防止各种安全隐患。

Q series AC charging piles can fully charge the electric vehicle in a short time, so that you can restore the driving ability of the vehicle in a short time. Sturdy and durable, with good environmental adaptability, it can work continuously and stably in various environments. With a number of security measures, such as overload protection, short circuit protection, grounding fault protection, etc., it can effectively prevent various security risks.

蓝牙、WIFI、4G、以太网多种连接方式
Bluetooth, WIFI, 4G, Ethernet. Multiple connection modes

OCPP1.6, 共享充电一桩多人使用
OCPP1.6, shared charging is used by many people.

刷卡启动、省心方便、谨防盗电
Swipe card to start, worry-free and convenient, anti-theft electricity

APP/小程序可远程监控充电桩/充电站情况
APP/ applet can remotely monitor charging piles/stations.

立柱式/壁挂式, 适用各种环境安装
Column type/wall type, suitable for installation in various environments.

· 款式选择 Style selection



· 枪头选择 Charger selection



产品介绍：国、欧、美标交流充电桩

Product Introduction: AC EV Chargers Compliant with GB/T, EU, and US Standards



产品参数 Parameter

功率等级
电源
额定电压
额定电流
频率
输出电压
输出电流
额定功率
电缆长度
外壳材质
启动方式
LED指示灯
RCD
电气保护
防水等级
安装方式
工作温度
储存温度
工作湿度
海拔高度
产品尺寸
包装尺寸
净重
毛重
执行标准
产品认证

7kW/h	11kW/h	22kW/h
L+N+PE	L1+L2+L3+N+PE	L1+L2+L3+N+PE
AC 220-240V	AC 380-400V	AC 380-400V
32A	16A	32A
50/60Hz	50/60Hz	50/60Hz
AC 220-240V	AC 380-400V	AC 380-400V
32A	16A	32A
7kW/h	11kW/h	22kW/h
3.5m(可定制长度)/Customizable length		
PC9010		
即插即用/刷卡(Plug-and-Play)/RFID Reader		
绿/蓝/红 (蓝色-待机;绿色-充电桩与车连接, 闪烁表示充电中;红色-异常) Green/blue/red (blue-standby;green-charger connected to the vehicle, flashing- charging;red- abnormal)		
A		
过压保护、欠压保护、接地保护、防雷保护、漏电保护、阻燃保护、过流保护、智能温控保护、继电器粘连保护、输入关断保护、车线级防护和防护人 Overvoltage protection, undervoltage protection, grounding protection, lightning protection, leakage protection, flame retardant protection, overcurrent protection, intelligent temperature control protection, relay adhesion protection, input shutdown protection, vehicle specification level protection vehicle and protective personnel		
IP66(枪头连接器在耦合状态下 IP55)/IP66 (IP55 when the gun head connector is coupled)		
壁挂式/杆式安装(Wall-mount/Pole-mount)		
-30°C~+50°C		
-40°C~+80°C		
5%~95% 无凝霜, 无结露(5%~95% no moisture condensation or frost)		
<2000M		
35.5*22.8*11.8cm		
52*24*22cm		
≈4.2KG		
≈5.2KG		
GB/T18487.1 GB/T18487.2 GB/T20234.2 GB/T34657.1 NB/T33002 NB/T33008.2		
CE/FCC/ROHS/UKCA		

Q3.1系列交流充电桩

Q3.1 series AC charging pile

Q3.1系列交流充电桩可以在较短的时间内为电动汽车充满电,使您能够在短时间内恢复车辆的行驶能力;坚固耐用,具有良好的环境适应性,可在各种环境下持续稳定工作。具备多项安全保障措施,如过载保护、短路保护、接地故障保护等,可有效防止各种安全隐患。
Q series AC charging piles can fully charge the electric vehicle in a short time, so that you can restore the driving ability of the vehicle in a short time. Sturdy and durable, with good environmental adaptability, it can work continuously and stably in various environments. With a number of security measures, such as overload protection, short circuit protection, grounding fault protection, etc., it can effectively prevent various security risks.

蓝牙、WIFI、4G、以太网多种连接方式
Bluetooth, WIFI, 4G, Ethernet. Multiple connection modes

刷卡启动、省心方便、谨防盗电
Swipe card to start, worry-free and convenient, anti-theft electricity

立柱式/壁挂式, 适用各种环境安装
Column type/wall type, suitable for installation in various environments.

OCPP1.6, 共享充电一桩多人使用
OCPP1.6, shared charging is used by many people.

APP小程序可远程监控充电桩/充电站情况
APP/小程序可远程监控充电桩/充电站情况

款式选择 Style selection



白色/white



黑色/black

枪头选择 Charger selection



美标
Type1



欧标
Type2



国标
GB/T



特斯拉
Tesla Charging Port



产品介绍：国、欧、美标交流充电桩

Product Introduction: AC EV Chargers Compliant with GB/T, EU, and US Standards



QQ系列交流充电桩

QQseries AC charging pile

QQ系列交流充电桩可以在较短的时间内为电动汽车充满电,使您能够在短时间内恢复车辆的行驶能力;坚固耐用,具有良好的环境适应性,可在各种环境下持续稳定工作。具备多项安全保障措施,如过载保护、短路保护、接地故障保护等,可有效防止各种安全隐患。

QQ series AC charging piles can fully charge the electric vehicle in a short time, so that you can restore the driving ability of the vehicle in a short time. Sturdy and durable, with good environmental adaptability, it can work continuously and stably in various environments. With a number of security measures, such as overload protection, short circuit protection, grounding fault protection, etc., it can effectively prevent various security risks.

蓝牙、WIFI、4G、以太网多种连接方式
Bluetooth, WIFI, 4G, Ethernet. Multiple connection modes

OCPP1.6, 共享充电一桩多人使用
OCPP1.6, shared charging is used by many people.

刷卡启动、省心方便、谨防盗电
Swipe card to start, worry-free and convenient, anti-theft electricity

APP/小程序可远程监控充电桩/充电站情况
APP/ applet can remotely monitor charging piles/stations.

立柱式/壁挂式,适用各种环境安装
Column type/wall type, suitable for installation in various environments.

·枪头选择 Charger selection



美标
Type1



欧标
Type2



国标
GB/T



特斯拉口
Tesla Charging Port

产品参数 Parameter

功率等级

电源

额定电压

额定电流

频率

输出电压

输出电流

额定功率

电缆长度

外壳材质

启动方式

LED指示灯

RCD

电气保护

防水等级

安装方式

工作温度

储存温度

工作湿度

海拔高度

产品尺寸

包装尺寸

净重

毛重

执行标准

产品认证

7kW/h

L+N+PE

AC 220-240V

32A

50/60Hz

AC 220-240V

32A

7kW/h

11kW/h

L1+L2+L3+N+PE

AC 380-400V

16A

50/60Hz

AC 380-400V

16A

11kW/h

22kW/h

L1+L2+L3+N+PE

AC 380-400V

32A

50/60Hz

AC 380-400V

32A

22kW/h

3.5m(可定制长度)/Customizable length

PC9010

即插即用/刷卡(Plug-and-Play/RFID Reader)

绿/蓝/红(蓝色-待机;绿色-充电桩与车连接,闪烁表示充电中;红色-异常) green/blue/red (blue -standby; green - charger connected to the vehicle, flashing - charging; red - abnormal)

A

过压保护、欠压保护、接地保护、防雷保护、漏电保护、阻燃保护、过流保护、智能温控保护、继电器粘连保护、输入关断保护、车感级防护和防人入侵
Overvoltage protection, undervoltage protection, grounding protection, lightning protection, leakage protection, flame retardant protection, overcurrent protection, intelligent temperature control protection, relay adhesion protection, input shutdown protection, vehicle specification level protection vehicle and protectiversonnel

IP66(枪头连接器在耦合状态下 IP55)/IP66 (IP55 when the gun head connector is coupled)

壁挂式/杆式安装(Wall-mount/Pole-mount)

-30°C~+50°C

-40°C~+80°C

5%~95%无凝露,无结露(5%~95% no moisture condensation or frost)

<2000M

21.5*23*14.9cm

52*24*22cm

≈4.2KG

≈5.2KG

GB/T18487.1 GB/T18487.2 GB/T20234.2 GB/T34657.1 NB/T33002 NB/T33008.2

CE/FCC/ROHS/UKCA

产品介绍：国标直流充电桩

Product Introduction: GB/T DC Charger



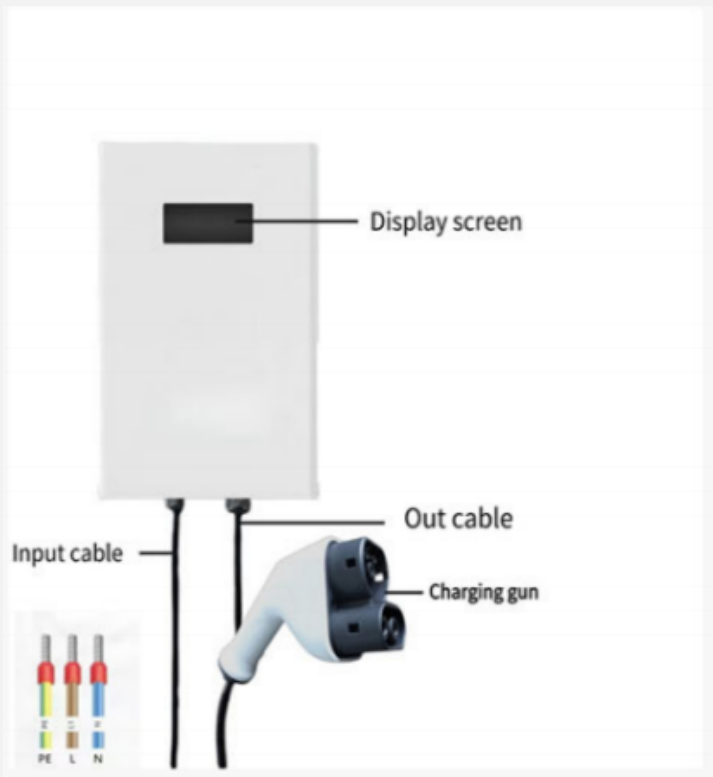
详细参数

TECHNICAL SPECIFICATIONS

型号 Model		EBC直流系列 EBCDC Series
输入 Input	输入电压 Input Voltage	AC-220V
	输入频率 Input Frequency	50Hz±10%
输出 Output	额定功率 Rated Power	7KW
	输出电压 Output Voltage	DC200-1000V
	输出电流 Output Current	0-23A
电气指标 Electrical specifications	线缆长度 Cable Length	输入线1.5米，输出枪线5米(长度可定制) Input Cable 1.5m, Output Cable 5m (Length Customizable)
	枪数 Number of Guns	单枪 Single Gun
	充电效率 Charging Efficiency	≥95%
	人机界面 Interface Display	4.3寸触摸屏 4.3-inch Touch Screen
功能设计 Functional Design	充电模式 Charging Modes	充满自停 Auto-stop when fully charged
	充电方式 Charging Methods	能触摸屏预约充电 Touch screen available, charging can be booked
	执行标准 Execution Standards	GB2011/GB2015
安全设计 Safety Design	安全功能 Safety Functions	短路、过压、欠压、过温、过流、急停、漏电故障保护 Short circuit, overvoltage, undervoltage, overtemperature, overcurrent, emergency stop, and leakage fault protection
	工作温度 Working Temperature	-20C°~50C°
环境指标 Environmental Indicators	工作湿度 Working Humidity	5%~95%无凝霜 5%~95% no moisture condensation or frost
	工作海拔 Working Altitude	2000m
	防护等级 Protection Level	IP54
	材质 Material	钣金+亚克力面板 Sheet Metal + Acrylic Panel
	冷却方式 Cooling Method	强制风冷 air cooling
	安装方式 Installation Method	壁挂式/立柱式 Wall-mounted / Pole-mounted
	设备尺寸 Device dimensions	320*125*100mm
设备重量 Weight	15Kg	

产品介绍：国标直流充电桩

Product Introduction: GB/T DC Charger



详细参数

TECHNICAL SPECIFICATIONS

		EBC 直流系列 EBC DC Series
型号 Model		EBC 7000
输入 Input	输入电压 Input Voltage	AC 90-260V
	输入频率 Input Frequency	50Hz±10%
输出 Output	额定功率 Rated Power	7KW
	输出电压 Output Voltage	DC200-1000V
	输出电流 Output Current	0-23A, 输出功率6.6kW 0-23A, Output Power: 6.6 kW
电气指标 Electrical specifications	线缆长度 Cable Length	输入线1.5米, 输出枪线5米(长度可定制) Input Cable 1.5m, Output Cable 5m (Length Customizable)
	枪数 Number of Guns	单枪 Single Gun
	充电效率 Charging Efficiency	95%
功能设计 Functional Design	人机界面 Interface Display	2.7寸彩色数码显示 2.7-inch Color Digital Display
	充电模式 Charging Modes	充满自停 Auto-stop when fully charged
	充电方式 Charging Methods	即插即充 Plug and Charge
安全设计 Safety Design	执行标准 Execution Standards	GB2011/GB2015
	安全功能 Safety Functions	短路、过压、欠压、过温、过流、急停、漏电故障保护 Short circuit, overvoltage, undervoltage, overtemperature, overcurrent, emergency stop, and leakage fault protection
环境指标 Environmental indicators	工作温度 Working Temperature	-20C°-50C°
	工作湿度 Working Humidity	5%-95%无凝露 5%-95% no moisture condensation or frost
	工作海拔 Working Altitude	2000m
	防护等级 Protection Level	IP54
	材质 Material	钣金+亚克力面板 Sheet Metal + Acrylic Panel
	冷却方式 Cooling Method	强制风冷 air cooling
	安装方式 Installation Method	壁挂式安装, 可与交流桩取电 Wall-mounted Installation, Powered by AC Charger
设备尺寸 Device Dimensions	425*220*150mm	
设备重量 Weight	13Kg	

产品介绍：国、欧、美标电动摩托直流车充电桩

Product Introduction: DC Fast Chargers for Electric Motorcycles (GB/T, EU & US Standards)



技术参数

TECHNICAL SPECIFICATIONS

6.6KW直流电瓶车运营版充电桩		
6.6 kW DC Battery Vehicle Charging Station (Operational Version)		
型号 Model	PTN-DDC03-6600	
项目 Project	参数 Parameters	
电规 规格 Electrical Specifications	接线方式 Wiring Method	L、N、PE
	额定输入电压 Rated Input Voltage	AC220V
	频率 Frequency	50Hz
	额定输出功率 Rated output power	3.3kW
	输出最大电流 Max. Output Current	40A
使用环境 Environment Environmental Conditions	额定输出电压 Rated Output Voltage	60VDC~100VDC
	单枪最大输出功率 Max. Output Power per Connector	3.3kW*2
	待机功耗 Standby Power	5~10W
	工作温度 Working temperature	-30℃~75℃
	工作湿度 Working humidity	5% ~ 95% 无凝露
机构规格 Mechanical Specifications	工作海拔 working altitude	≤2000m
	IP等级 IP Rating	Ip54
	冷却方式 Cooling Method	自然冷却 Natural Cooling
	产品尺寸 Product Dimensions	300 × 150 × 1400 (mm)
保护机制 Protection Mechanism	外壳材质 Housing Material	镀锌板喷粉、玻璃面板 Galvanized Steel with Powder Coating, Glass Panel
	设备净重 Net Weight	≤25KG
	线缆长度 Cable Length	5m
状态显示 Status Display	噪声 Noise	≤60db (A)
	输入侧 Input Side	低电压、过电压、漏电防护、过温保护 Low Voltage Protection, Overvoltage Protection, Leakage Protection, Overtemperature Protection
执行标准 Executive Standard	输出侧 Output Side	过电流、过压, 异常拔枪保护 Overcurrent Protection, Overvoltage Protection, Abnormal Disconnect Protection
	内部 Internal	过温度, MCU功能错误侦测 Overtemperature, MCU Malfunction Detection
通讯标准 Communication Standard	状态指示 Status Indicator	LED流水灯
	显示屏 Display	LED Running Light 4.3寸OLED 4.3-inch OLED
执行标准 Executive Standard	刷卡充电(选配)、4G(选配)、LEN(选配) RFID Charging (Optional) 4G (Optional) /LEN (Optional)	
		SLO (运行可行性证书) / SNI (印尼国家标准) / SDPPI (电信设备认证)

产品介绍：国、欧、美标电动摩托车直流充电桩

Product Introduction: DC Fast Chargers for Electric Motorcycles (GB/T, EU & US Standards)



电动摩托车20KW直流双枪充电桩

20kW DC Dual-Gun EV Charger for Electric Motorcycles



技术参数

TECHNICAL SPECIFICATIONS

直流电动摩托车运营版充电桩		
DC Electric Motorcycle Charger (Commercial Version)		
型号 Model	PTN-DDC02	
项目 Project	参数 Parameters	
电器规格 Electrical Specifications	接线方式 Wiring Method	L1+L2+L3+N+PE
	额定输入电压 Rated Input Voltage	AC380V
	频率 Frequency	50Hz
	额定输出功率 Rated output power	10kW
	输出最大电流 Max. Output Current	100A
使用环境 Environmental Conditions	额定输出电压 Rated Output Voltage	48VDC~100VDC
	单枪最大输出功率 Max. Output Power per Connector	10kw*2
	待机功耗 Standby Power	5~10W
	工作温度 Working temperature	-30℃~75℃
	工作湿度 Working humidity	5% ~ 95% 无凝露
机构规格 Mechanical Specifications	工作海拔 working altitude	≤2000m
	IP等级 IP Rating	Ip54
	冷却方式 Cooling Method	自然冷却 Natural Cooling
	产品尺寸 Product Dimensions	550 × 250 × 700 (mm)
	外壳材质 Housing Material	镀锌板喷粉、玻璃面板 Galvanized Steel with Powder Coating, Glass Panel
保护机制 Protection Mechanism	设备净重 Net Weight	≤25KG
	线缆长度 Cable Length	5m
	噪声 Noise	≤60db (A)
	输入侧 Input Side	低电压、过电压、漏电防护、过温保护 Low Voltage Protection, Overvoltage Protection, Leakage Protection, Overtemperature Protection
	输出侧 Output Side	过电流、过压, 异常拔枪保护 Overcurrent Protection, Overvoltage Protection, Abnormal Disconnect Protection
状态显示 Status Display	内部 Internal	过温度, MCU功能错误侦测 Overtemperature, MCU Malfunction Detection
	状态指示 Status Indicator	LED流水灯 LED Running Light
	显示屏 Display	4.3寸OLED 4.3-inch OLED
通讯标准 Communication Standard	刷卡充电(选配)、4G(选配)、LE1N(选配) RFID Charging (Optional) / 4G (Optional) / LE1N (Optional)	

产品介绍：国标、欧标、美标直流充电桩

Product Introduction: DC EV Chargers (GB/T, EU, and US Standards)



Putainen

EU Version CCS2

DC20KW—40KW

ODM/OEM



技术参数

TECHNICAL SPECIFICATIONS

产品型号 Model No.		XC-20KW-c	XC-30KW-C	XC-40KW-c
产品规格 Product Specifications	额定功率 Rated Power	20KW	30KW	40KW
	安装方式 Installation Method	壁挂式/Vertical standing		
	线路布局 Line Layout	下进下出/Bottom Entry & Exit		
	设备尺寸 Device Dimensions	490*680*190mm		
	输入电压与频率 Input Voltage & Frequency	380VAC ± 20%/50Hz/60Hz		
	输入电流 Input Current	38A	50A	67A
	输出电压 Output Voltage	200VDC--1000VDC		
	最大输出电流 Max. Output Current	67A	100A	134A
	线缆长度 Cable Length	5m		
	测量精度 Meas. Accuracy	1级 Level 1.0		
电器规格 Electrical Specifications	限流保护值 Current Limit	110%		
	稳压精度 Voltage Regulation Accuracy	± 0.5%		
	稳流精度 Stabilized Current Precision	± 1%		
	纹波系数 Ripple Factor	± 0.5%		
	效率 Efficiency	95%		
	功率因数 Power Factor	0.98(50%负载以上) 0.9(above 50% load)		
	谐波含量 (THD) Harmonic content (THD)	<5%(50%负载以上) 5%(above 50% load)		
	功能设计 Functional Design	人机界面 Interface Display	4.3英寸高亮度彩色触摸屏 4.3-inch high brightness color touch screen	
充电模式 Charging Modes		即插即充/刷卡启动/预约启动 automatic/inserted battery/inserted amount/fixd time		
充电方式 Charging Methods		刷卡/扫码/输入密码 card swiping/code scanning/password		
支付方式 Payment Methods		刷卡/扫二维码/输入密码 swipe card/scan code/password		
联网方式 Networking method	以太网/4G/WiFi Ethernet/4G/Wifi			
安全设计 Safety Design	执行标准 Execution Standards	GB/T20234, GB/T18487, GB/T27930, NB/T33008(能)/T33002, 1EC6185123, 1EC62196, 1EC61851-21		
	安全功能 Safety Functions	充电桩温度检测, 过电压保护, 欠电压保护, 过载保护, 短路保护, 接地保护, 过温保护, 低温保护, 绝缘状态监测保护, 极性反接保护, 防雷保护, 紧急停止保护, 漏电保护, grounding protection, over temperature protection, low temperature protection, insulation monitoring protection, polarity reversal protection, lightning protection, emergency stop protection, leakage protection		
环境指标 Environmental indicators	工作温度 Working Temperature	-20 ~+50		
	工作湿度 Working Humidity	5%-95%无凝露 5%-95% no moisture condensation or frost		
	工作海拔 Working Altitude	<2000m		
	防护等级 Protection Level	IP54		
	冷却方式 Cooling Method	强制风冷 air cooling		
	噪声 Noise	60dB		
	MTBF	100,000 小时 1000 Hours		

产品介绍：直流充电桩

Product Introduction: DC EV Chargers



60-80KW一体式直流充电桩 60-80kW Integrated DC EV Charger

本产品主要由人机交互触摸屏、读卡器、电能计量模块、充电模块、通讯模块、充电接口、控制模块和柜体组成。充电桩具有多重保护功能，输入输出具备双重安全保护措施，充电时可实时监测充电电缆的连接状态，连接异常时立即终止充电，确保充电过程中的人身和车辆安全。

人性化的界面显示和控制引导功能，让客户方便完成充电过程；对外提供以太网、GPRS等多种通信接口，与监控中心、运营管理中心实时通信，实时监测充电状态。This product integrates a HMI touch screen, RFID reader, energy meter, charging module, communication module, charging connector, and the main enclosure. The charger features multi-layered protection with dual safety measures for both input and output. It monitors the charging cable connection in real-time and immediately terminates the session upon detecting abnormalities, ensuring user and vehicle safety. The user-friendly interface and control guidance simplify the charging process. Furthermore, it offers various communication interfaces (Ethernet, GPRS) for real-time data exchange with the monitoring and operation management centers.



技术参数

TECHNICAL SPECIFICATIONS

60-80KW一体式直流充电桩 60-80kW Integrated DC EV Charger			
产品型号 Model No.	PTN-DC60	PTN-DC80	
基本指标 General Specifications			
额定功率 Rated Power	60KW	80KW	
枪数 Number of Guns	2 (250A)		
散热方式 Cooling Method	强制风冷 Forced air cooling		
后台通讯 Back-end Communication	以太网/4G Ethernet/4G		
使用环境 Environmental Conditions	室内或室外 (IP54) Indoor or outdoor (IP54)		
外形尺寸 (宽X深X高) Dimensions (width*depth*height)	700*400*1400mm		
重量 (KG) Weight (KG)	190 (包含模块) 190 (including module)	220 (包含模块) 220 (including module)	
输入特性 Input Characteristics			
输入电压 Input voltage	400VAC \pm 15%, L1+L2+L3+N+PE		
频率 Frequency	50/60Hz		
额定输入电流 Rated input power	97A	129A	
功率因数 Powerfactor	≥ 0.99		
谐波 Harmonics	$\leq 5\%$		
输出特性 Output Characteristics			
电压范围 Output Voltage Range	200-1000VDC		
最大电流 Maximum current	A枪: 150A Gun A: 150A	B枪: 150A Gun B: 150A	A枪: 200A Gun A: 200A B枪: 200A Gun B: 200A
充电策略 Charging Strategy	40KW+20KW		40KW+40KW
峰值效率 Peak efficiency	95%		
输出电压误差 Output Voltage Accuracy	$\leq \pm 0.5\%$		
输出电流误差 Output Current Accuracy	$\geq 30A, \leq \pm 1\%$; $< 30A, \leq \pm 0.3A$		
稳压精度 Voltage Regulation Accuracy	$\leq \pm 0.5\%$		
稳流精度 Current Regulation Accuracy	$\leq \pm 1\%$		
纹波峰值 Ripple Peak Value	$\leq 1\%$		
环境指标 Environmental Specifications			
工作温度 Working Temperature	$-20 \sim +50^{\circ}\text{C}$		
存储温度 Storage Temperature	$-40 \sim +80^{\circ}\text{C}$		
相对湿度 Relative humidity	5~90% 无冷凝 5%~95% no moisture condensation or frost		
海拔高度 Altitude	2000m内无需降频, $\geq 2000\text{m}$ 每上升100米工作温度降低1 $^{\circ}\text{C}$ 2000 m: no derating required, $> 2000\text{m}$: reduce operating temperature by 1 $^{\circ}\text{C}$ per 100 m increase		

产品介绍：直流充电桩

Product Introduction: DC EV Chargers

120-180KW一体式直流充电桩

120-180kW Integrated DC EV Charger

本产品主要由人机交互触摸屏、读卡器、电能计量模块、充电模块、通讯模块、充电接口、控制模块和柜体组成。充电桩具有多重保护功能，输入输出具备双重安全保护措施，充电时可实时监测充电电缆的连接状态，连接异常时立即终止充电，确保充电过程中的人身和车辆安全。

人性化的界面显示和控制导引功能，让客户方便完成充电过程；对外提供以太网、GPRS等多种通信接口，与监控中心、运营管理中心实时通信，实时监测充电状态。

This product integrates a HMI touch screen, RFID reader, energy meter, charging module, communication module, charging connector, and the main enclosure.

The charger features multi-layered protection with dual safety measures for both input and output. It monitors the charging cable connection in real-time and immediately terminates the session upon detecting abnormalities, ensuring user and vehicle safety.

The user-friendly interface and control guidance simplify the charging process. Furthermore, it offers various communication interfaces (Ethernet, GPRS) for real-time data exchange with the monitoring and operation management centers.



技术参数

TECHNICAL SPECIFICATIONS

120-180KW一体式直流充电桩 120-180kW Integrated DC EV Charger		
产品型号 Model No.	PTN-DC120	PTN-DC180
基本指标 General Specifications		
额定功率 Rated Power	120KW	180KW
枪数 Number of Guns	2 (250A)	
散热方式 Cooling Method	强制风冷 Forced air cooling	
后台通讯 Backend Communication	以太网/4G Ethernet/4G	
使用环境 Environmental Conditions	室内或室外 (IP54) Indoor or outdoor (IP54)	
外形尺寸 (宽X深X高) Dimension (width x depth x height)	700*450*1700mm	
重量 (KG) Weight (KG)	240 (包含模块) 240 (including modules)	280 (包含模块) 280 (including modules)
输入特性 Input Characteristics		
输入电压 Input voltage	400VAC±15%, L1+L2+L3+N+PE	
频率 Frequency	50/60Hz	
额定输入电流 Rated input current	194A	259A
功率因数 Power factor	≥0.99	
谐波 Harmonics	≤5%	
输出特性 Output Characteristics		
电压范围 Output Voltage Range	200-1000VDC	
最大电流 Maximum current	A枪: 250A Gun A: 250A	B枪: 250A Gun B: 250A
充电策略 Charging Strategy	60KW+60KW	90KW+90KW
峰值效率 Peak efficiency	95%	
输出电压误差 Output Voltage Accuracy	≤±0.5%	
输出电流误差 Output Current Accuracy	≥30A, ≤±1%; <30A, ≤±0.3A	
稳压精度 Voltage Regulation Accuracy	≤±0.5%	
稳流精度 Current Regulation Accuracy	≤±1%	
纹波峰值 Ripple Peak Value	≤±1%	
环境指标 Environmental Specifications		
工作温度 Working Temperature	-20~+50°C	
存储温度 Storage Temperature	-40~+80°C	
相对湿度 Relative Humidity	5~90% 无冷凝	
海拔高度 Altitude	2000m内无需降额, ≥2000m每上升100米工作温度降低1°C 2000 m: no derating required, ≥2000 m: reduce operating temperature by 1°C per 100 m increase	

产品介绍：群充直流充电桩

Product Introduction: Group Charging DC System



群充充电桩

Group Charging System

本产品主要由人机交互触摸屏、读卡器、电能计量模块、充电模块、通讯模块、充电接口、控制模块和柜体组成。充电桩具有多重保护功能，输入输出具备双重安全保护措施，充电时可实时监测充电电缆的连接状态，连接异常时立即终止充电，确保充电过程中的人身和车辆安全。

人性化的界面显示和控制引导功能，让客户方便完成充电过程；对外提供以太网、GPRS等多种通信接口，与监控中心、运营管理中心实时通信，实时监测充电状态。

This product integrates a HMI touch screen, RFID reader, energy meter, charging module, communication module, charging connector, and the main enclosure.

The charger features multi-layered protection with dual safety measures for both input and output. It monitors the charging cable connection in real-time and immediately terminates the session upon detecting abnormalities, ensuring user and vehicle safety.

The user-friendly interface and control guidance simplify the charging process.

Furthermore, it offers various communication interfaces (Ethernet, GPRS) for real-time data exchange with the monitoring and operation management centers.



技术参数

TECHNICAL SPECIFICATIONS

产品型号 Model No.	PTN240-04-02	PTN360-06-02	PTN480-08-02
详细规格 Detailed Specifications	额定功率 Rated Power 240KW	360KW	480KW
充电设备	安装方式 Installation Method	立式 Vertical	
	线路布局 Line Layout	下进下出 Bottom Entry & Exit	
	设备尺寸 Device dimensions	800*800*1800mm	
充电设备 Charging Equipment	输入电压 Input Voltage	AC400V ± 20%	
	输入频率 Input Frequency	50/60Hz	
	输出电压 Output Voltage	200-1000V	
	单枪输出电流范围 Single Gun Output Current Range	200-1000V恒功率0-250A 200-1000V constant power 0-250A	200-1000V恒功率0-250A 200-1000V constant power 0-250A
	线缆长度 Cable Length	5M(可定制) 5M (Customizable)	
	测量精度 Meas. Accuracy	1级 Level: 1.0	
电气指标 Electrical specifications	限流保护值 Current Limit	110%	
	稳压精度 Voltage Regulation Accuracy	± 0.5%	
	稳流精度 Stabilized Current Precision	± 1%	
	纹波系数 Ripple Factor	± 0.5%	
	效率 Efficiency	95%	
	功率因数 Power Factor	0.98(50%负载以上) 0.98 (above 50% load)	
	谐波含量 (THD) Harmonic content (THD)	<5%(50%负载以上) <5% (above 50% load)	
功能设计 Functional Design	人机界面 Interface Display	7寸高亮彩色触摸屏 7-inch high brightness color touch screen	
	充电模式 Charging Modes	自动充满/定电量/定金额/定时间 Auto Full / Fixed Energy / Fixed Amount / Fixed Time	
	充电方式 Charging Methods	即插即充/刷卡充电/扫码充电 Plug & Charge / RFID / QR Code Scan	
	支付方式 Payment Methods	刷卡支付/扫码支付 RFID Payment / QR Code Payment	
	联网方式 Networking method	以太网 / 4G Ethernet / 4G	
安全设计 Safety Design	执行标准 Execution Standards	GB/T20234、GB/T18487、GB/T27930、NB/T33008、NB/T33002	
	安全功能 Safety Functions	充电桩温度检测、过压保护、欠压保护、过载保护、短路保护、接地保护、过温保护、低温保护、绝缘监测保护、极性反接保护、防雷保护、急停保护、漏电保护 charging gun temperature detection, overvoltage protection, undervoltage protection, overload protection, short circuit protection, grounding protection, over temperature protection, low temperature protection, insulation monitoring protection, polarity reversal protection, lightning protection, emergency stop protection, leakage protection	
环境指标 Environmental Indicators	工作温度 Working Temperature	-20 ~ +50	
	工作湿度 Working Humidity	5%-95%无凝露 5%-95% no moisture condensation or frost	
	工作海拔 Working Altitude	<2000m	
	防护等级 Protection Level	IP54	
	冷却方式 Cooling Method	强制风冷 air cooling	
	噪声 Noise	60dB	
	MTBF	100,000 小时 1000 Hours	

01 | 海外欧标/美 标运营平台

Operation Platform for
Overseas Charging Piles

欧标美标运营平台部署

1. 通讯：OCPP1.6/2.0;
2. APP中英文(多语种)切换；
3. 充电桩运营平台；
4. 海外支付方式：WLAN/4G/WIFI；
5. 远程OTA；
6. 海外服务器独立部署。

European & American Operation Platform

- 1.Communication Protocol: OCPP 1.6 / 2.0;
- 2.APP supports switching between Chinese and English (multi-language support);
- 3.EV Charging Station Operation Management Platform;
- 4.Overseas Payment Methods: WLAN / 4G / WiFi;
- 5.Remote OTA ;
- 6.Independent deployment of overseas servers.

产品介绍：海外充电桩运营APP

Product Introduction: Overseas EV Charging Operation App



KINFUVA

American standard wall-mounted charging station



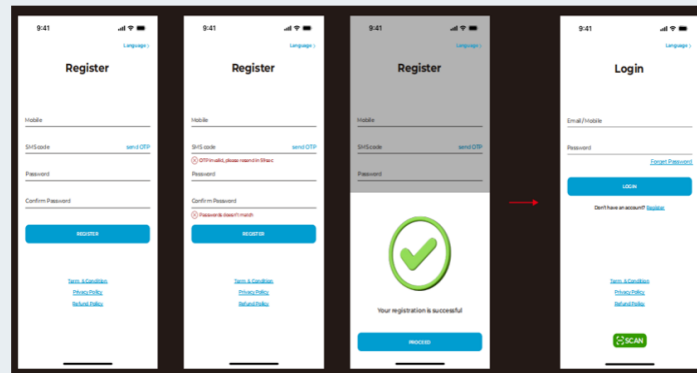
American Standard affordable 7-hole gun head
SAE J1772 standard

KINFUVA

European standard wall-mounted charging pile



European standard affordable 7-hole gun head
SAE J1772 standard



02 |

国内充电桩运营平台

Domestic Charging Pile Operation Platform

国内充电桩运营平台部署

1. 通讯：云快充1.5/1.6/2.0；
2. 独立部署；
3. 充电桩贴牌商/代理商/分销商运营平台；
4. 微信支付支付宝支付、第三方分账；
5. 远程OTA；
6. 快充/慢充、电瓶车充电；
7. 免密代扣、大数据展示中心；
8. 高德、腾讯、百度地图对接；

Domestic Charging Station Operation Platform Deployment

- 1.Communication Protocol: Cloud Fast Charge 1.5 / 1.6 / 2.0;
- .Independent deployment;
- 3.Operation platform for OEMs / agents / distributors of charging stations;
- 4.WeChat Pay, Alipay, third-party account splitting;
- 5.RemoteOTA;
- 6.Fast charging / slow charging, electric bicycle charging;
- 7.Password-free automatic deduction, big data dashboard;
- 8.Integration with Gaode, Tencent, and Baidu Maps.

产品介绍：充电桩运营平台大数据中心

Product Introduction: Big Data Center for EV Charging Operation Platform



产品介绍：充电桩运营平台

Product Introduction: EV Charging Operation Platform



充电运营管理云平台

CHARGING OPERATION MANAGEMENT CLOUD PLATFORM

充电运营管理云平台采用物联网 (IoT) 架构体系设计, 便于扩展升级, 实现智能化充电运维管理, 整合充电运营商、充电客户、电力企业、充电站业主资源, 提升充电客户体验、提高充电桩的使用效率、提高运维团队效率。

充电运营管理云平台由充电运营管理、动力环境监控、办公自动化三个模块组成, 实现充电、光伏、储能一体化场站的智能化集中管理, 并达到良好的用户体验和良好的经济效益。

The platform is designed on an IoT (Internet of Things) architecture, ensuring seamless scalability and future upgrades. It integrates resources from CPOs, end-users, utilities, and site owners to deliver a smart, centralized management experience. By doing so, it significantly enhances user satisfaction while maximizing charger utilization and O&M team efficiency.

Composed of three core modules—Charging Operation Management, Power & Environmental Monitoring, and Office Automation—the platform enables intelligent centralized control over integrated sites (Solar, Storage, and Charging). This architecture ensures an optimal user experience alongside superior economic returns.

平台特点

Platform Features

车辆监控: 提供用户列表, 地图随车辆位置跟踪移动, 始终保持车辆在地图范围内

报表统计: 能耗曲线、故障统计、上线率、出车率、启动/熄火、警情、违规等

数据维护: 公司信息、车辆及司机信息、终端及SIM卡信息、角色及权限管理

多种支付: 刷卡、微信、支付宝

接入方式: 微信小程序, 可在线寻桩、预约、监控等

Vehicle Monitoring: Real-time vehicle list with map tracking; the map view automatically follows the vehicle's location to keep it within range.

Reporting & Statistics: Provides analytics on Energy Consumption Curves, Fault Stats, Online Rate, Vehicle Utilization Rate, Ignition/Flameout events, Alarms, and Violation records.

Data Management: Company profiles, Vehicle & Driver information, Device & SIM card details, and Role & Permission management.

Payment Options: Supports RFID Card, WeChat Pay, and Alipay.

Access Channels: WeChat Mini Program for online station locating, reservation, and real-time monitoring.

平台大数据技术

Platform Big Data Technology

通过AI+大数据驱动, 自主学习历史状态数据;

自动生成成功率调配模型, 变被动响应为主动预测;

精准调度, 智能运维, 大幅提升充电运营效率。

Powered by AI and big data, the system autonomously learns from historical operational data, automatically generates success rate allocation model, and shifts from passive response to proactive prediction. With precise scheduling and intelligent operation & maintenance, it significantly improves charging network efficiency.

